

PIERRES NATURELLES

GRANITS

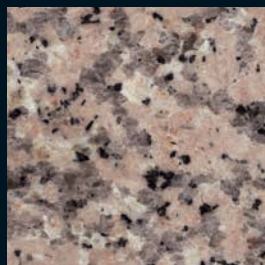
Les PIERRES
NATURELLES sont
présentées en finition
« Polie »

FINITIONS :

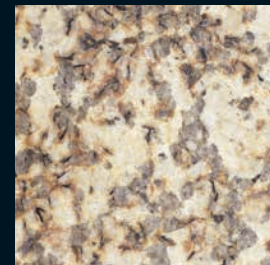
A : Adoucie
Bo : Bouchardée
Br : Brossée
F : Flammée
P : Polie
S : Sablée



BLANCO CRISTAL (A, Bo, Br, F, P)



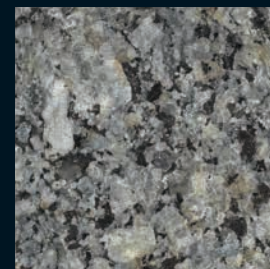
ROSA PORRINO (A, Bo, Br, F, P)



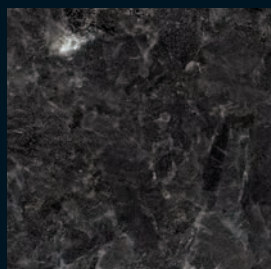
AMARILLO TRIGO (A, Bo, Br, P)



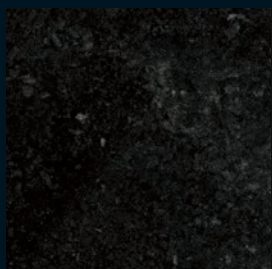
TRAGAL (A, Bo, Br, F, P)



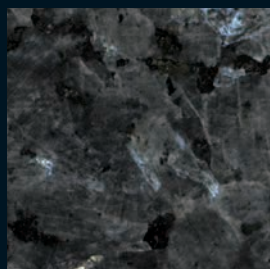
AZUL NOCHE (A, Bo, Br, F, P)



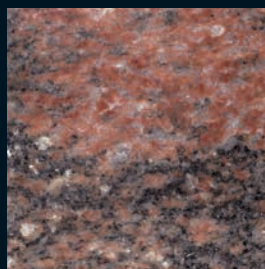
NOIR ANGOLA
(A, Bo, Br, F, P)



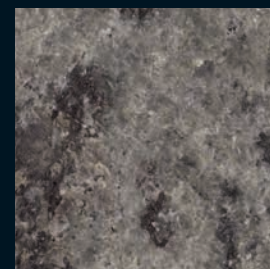
NOIR ZIMBABWE
(A, Bo, Br, F, P)



LABRADOR OSCURO
(A, Bo, Br, F, P)



ROJO MULTICOLOR
(A, Bo, Br, F, P)



VERDE OLIVA
(A, Bo, Br, F, P)

AUTRES PIERRES



BASALTE NOIR MONGOLIE (A, Bo, Br, F, P)

Les parements PIERRES NATURELLES peuvent être sujets à des variations de teintes.

PIERRES NATURELLES

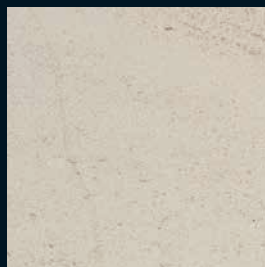
CALCAIRES

FINITIONS :

- A : Adoucie
- Bo: Bouchardée
- Br : Brossée
- F : Flammée
- P : Polie
- S : Sablée



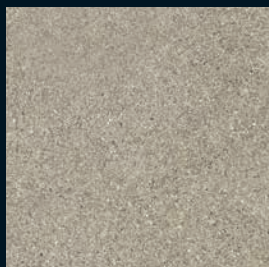
MOLEANOS (A, Bo, Br, S)



SEMI RIJO LR (A, Bo, Br, S)



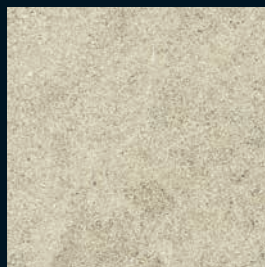
VALVERDE (A, Bo, Br, F, S)



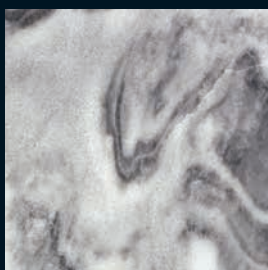
AZUL (A, Bo, Br, S)



GALAXY (A, Bo, Br, S)



FANTASIA (A, Bo, Br, S)



RUIVINA (A, Bo, Br, S)



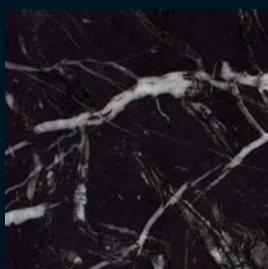
AMARELLO (A, Bo, Br, S)



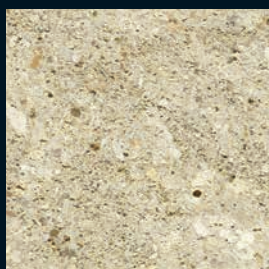
DIAMANTE (A, Bo, Br, S)



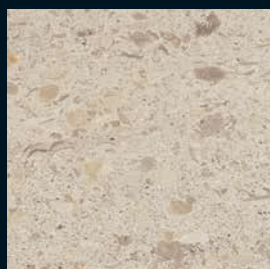
BEIGE HYNDRA (A, Bo, Br, S)



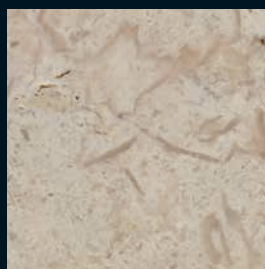
NEGRO MARKINA
(A, Bo, Br, S)



CREMA MAROC
(A, Bo, Br, S)



MOCA CREMA
(A, Bo, Br, F, S)



LIOZ (A, Bo, Br, S)

Les parements PIERRES NATURELLES peuvent être sujets à des variations de teintes.