

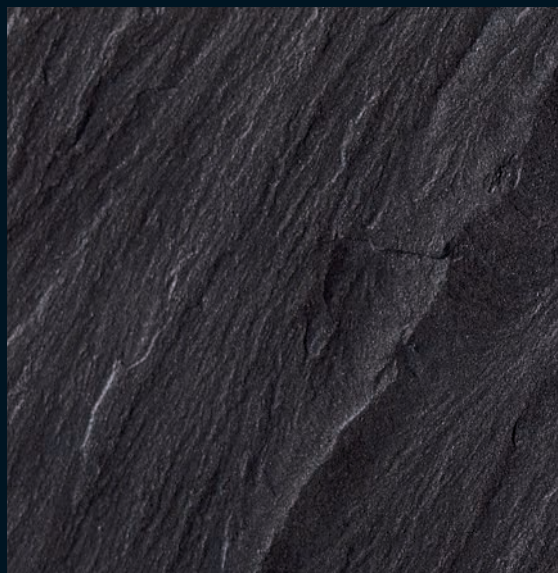
# CERA

## SERIE UNICOLORE



BIANCO (N)

## SERIE LAVAGNA



NERA (N)

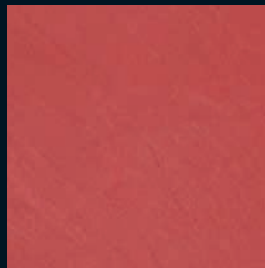
FINITIONS :

N : Naturelle

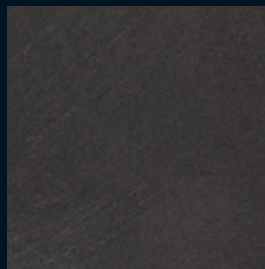
## SERIE LOFT



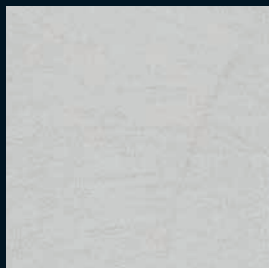
AVORIO (N)



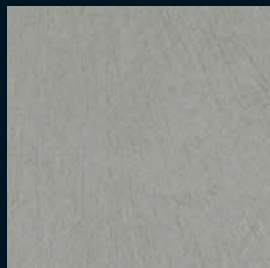
ROSSO (N)



NERO (N)



BIANCO (N)



GRIGIO (N)



MOKA (N)

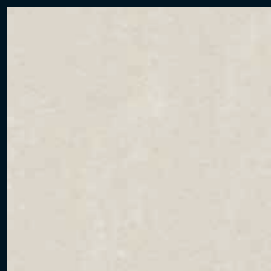
Le parement CERA peut être sujet à des variations de teintes.

# CERA

## SERIE MARTE

### FINITIONS:

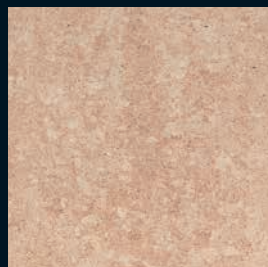
- N : Naturelle
- Bo : Bouchardée
- H : Honed



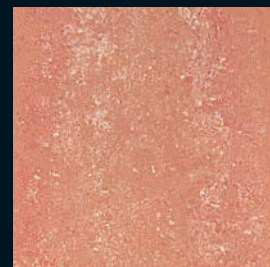
THASSOS (N, Bo, H)



CREMA MARFIL (N, Bo, H)



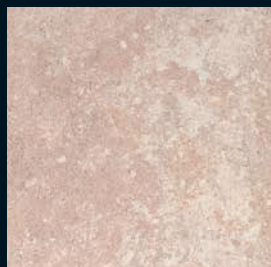
ROSA PORTOGALLO (N, Bo, H)



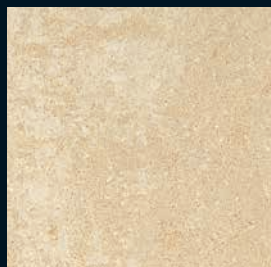
ROSA BRAZILE (N, Bo, H)



GRIGIO EGEO (N, Bo, H)



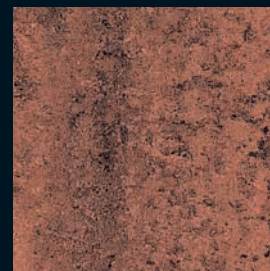
ROSA NORVEGIA (N, Bo, H)



BOTTICINO (N, Bo, H)



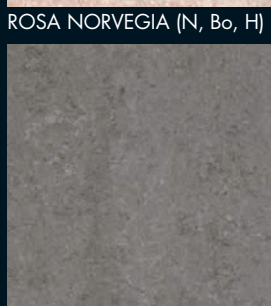
ROSSO SORAYA (N, Bo, H)



MADRAS PINK (N, Bo, H)



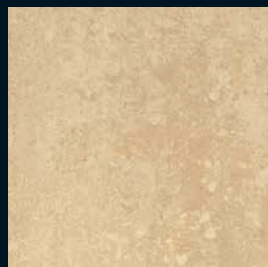
RAGGIO DI LUNA (N, Bo, H)



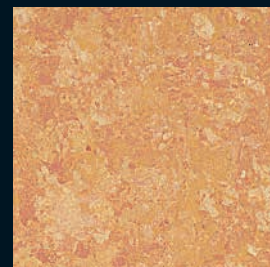
GRIGIO MAROSTICA (N, Bo, H)



BRONZETTO (N, Bo, H)



PALISSANDRO (N, Bo, H)



GIALLO REALE (N, Bo, H)



AZUL MACAUBA (N, Bo, H)



VERDE GUATEMALA (N, Bo, H)



AZUL BAHIA (N, Bo, H)



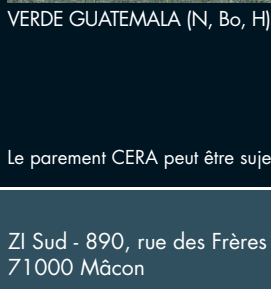
NERO ACAPULCO (N, Bo, H)



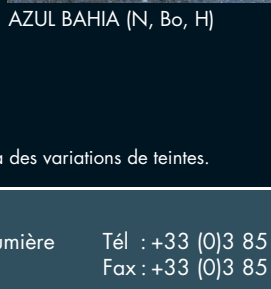
RAMORA BROWN (N, Bo, H)



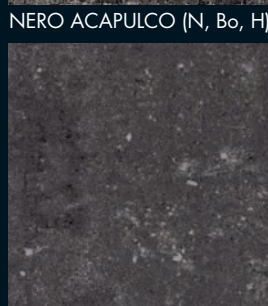
AZUL MACAUBA (N, Bo, H)



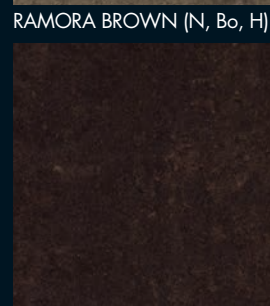
VERDE GUATEMALA (N, Bo, H)



AZUL BAHIA (N, Bo, H)



GRIGIO MAGGIA (N, Bo, H)



EMPERADOR (N, Bo, H)

Le parement CERA peut être sujet à des variations de teintes.